

HIQUAL HANDLING EQUIPMENT

LIVESTOCK EQUIPMENT



W: www.siuuxsteel.com // T: 1-877-782-3073 // E: info@siouxsteel.com

LIVESTOCK HANDLING EQUIPMENT

QUALITY, INNOVATION, SAFETY AND VALUE

HiQual has incorporated quality, innovation, safety and value into our extensive line of livestock and equine products.

To learn more about these fine products, visit us at www.siuoxsteel.com.



Tyler Madison
(Western US Sales Rep)



Ty Dean
(SD, ND, KS & CO Sales Rep)



Duane Kruse
(WI, IA, MN & MO Sales Rep)



Brian D. Henley
(Eastern US Sales Rep)



Beth Vacek
(Customer Engagement and
ProTec Buildings/Livestock
Sales Manager)



Kelly Gillespie
(Engineering)



Dan Tieszen
(Livestock Shipping)



Chad Desy
(Livestock Shipping)



HIQUAL PRODUCTS ARE
MADE IN THE USA



**LIVESTOCK
HANDLING EQUIPMENT**

1-877-782-3073

The Equipment To Have

No other product can match our quality and durability, while offering the most common sense solutions for livestock equipment.

Testimonial

"I have been to several farm shows and watched the cattle chutes and tubs go head to head. For my family, we use the chute, tub & alley system."

Easy to use and durable, which are both very important. Lord willing, someday I'll pass down my name, and a chute, tub & alley system."

Cord McCoy

Professional Bull Rider & Rancher

Livestock Management Solutions

GATES4
PANELS10
FENCING16
FEEDERS18
CALVING EQUIPMENT.22
WORKING EQUIPMENT24
HORSE STALLS.30



1-877-782-3073



196 1/2 E. 6th Street
Sioux Falls, SD 57104



www.siouxsteel.com



www.agpartsdirect.com



info@siouxsteel.com



GENERAL DUTY GATE

Designed for medium to light confinement, the General Duty Gate is comparable in strength to other more expensive 2" gates.

1.5
INCH

16
GAUGE

48
INCHES HIGH

5
BARS

SPECIFICATIONS:

- Square corners, 9 5/8" spacing
- 1 1/2" x 16 gauge posts
- 1 1/2" x 16 gauge rails
- Strong 14 gauge end posts
- 3/4"x 12" threaded rod
- **HINGES - INCLUDED**
- 3/16" x 32" plated proof coil chain
- High-Tensile, 58,000 psi steel tubing
- Notched vertical braces
- Baked-on brown powder coat finish
- 1 Year Warranty

To keep the product balanced in strength, the thickness of the end posts are 14 gauge.

Regardless of the application, the quality and price make this gate a bargain! Economical, but durable, 16 gauge rails for light confinement.

SUGGESTED APPLICATIONS:

- Horses in light confinement
- Riding arenas
- Driveways
- Pastures
- Deer, sheep, goats and other exotics

GENERAL DUTY	LENGTH	WEIGHT
SHQGTGD04	4'	33 lbs.
SHQGTGD06	6'	45 lbs.
SHQGTGD08	8'	55 lbs.
SHQGTGD10	10'	67 lbs.
SHQGTGD12	12'	78 lbs.
SHQGTGD14	14'	90 lbs.
SHQGTGD16	16'	98 lbs.
SHQGTGD18	18'	110 lbs.
SHQGTGD20	20'	114 lbs.



NOTE: Length refers to size of opening. The length of the gate is actually 5 1/2" shorter. For example, a 10' gate is actually 9' 6 1/2".

58,000 PSI POWDER COATED TOUGH 16 GAUGE



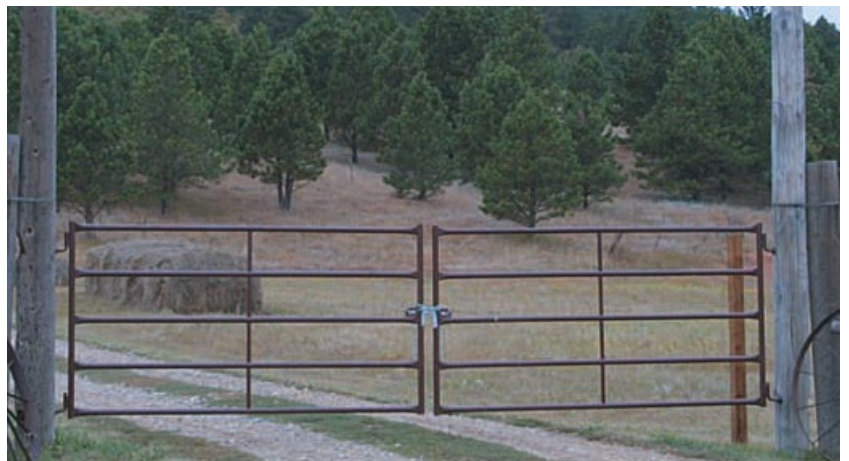
SHOP ONLINE!

www.agpartsdirect.com

Search local dealerships or buy direct online. MSRP product pricing featured along with additional product information.



1.5" Plastic Gate Cap
Part Number: S180214





HEAVY DUTY GATE

With 2", 16 gauge steel rated at 58,000 psi, the Heavy Duty Gate is truly the strongest gate on the market.

2 INCH	16 GAUGE	48 INCHES HIGH	5 BARS
------------------	--------------------	--------------------------	------------------

SPECIFICATIONS:

- Square corners, 9 3/8" spacing
- 2" x 16 gauge posts and rails
- Balanced gate without weak spots
- 1/4" x 48" chain with security latch
- 1" x 14 3/4" adjustable threaded rod

HINGES - INCLUDED

- High-Tensile, 58,000 psi steel tubing
- Notched vertical bracing
- Baked-on brown powder coat finish



NOTE: Length refers to size of opening. The length of the gate is actually 5 1/2" shorter. For example, a 10' gate is actually 9' 6 1/2".

58,000 PSI POWDER COATED TOUGH 16 GAUGE



Notched Vertical Bracing



Posi-Lock Chain Lock

NOTE:

All HiQual Gates come standard with notched vertical bracing and the posi-lock chain locks.

LIFETIME WARRANTY!

Ideal for almost any application, the Heavy Duty Gate line is HiQual's most popular gate.

The strength is further enhanced with a 1" x 14 3/4" adjustable threaded rod hinge which will even reach through a railroad tie. Since a gate is only as strong as its latch, a 1/4" x 48" chain is standard.

SUGGESTED APPLICATIONS:

- Most popular heavy duty gate
- Strong 16 gauge tube ideal for HD confinement
- Pastures
- Driveways
- Stallions and mares



HEAVY DUTY	LENGTH	WEIGHT
SHQGTHD04	4'	43 lbs.
SHQGTHD06	6'	57 lbs.
SHQGTHD08	8'	74 lbs.
SHQGTHD10	10'	87 lbs.
SHQGTHD12	12'	100 lbs.
SHQGTHD14	14'	117 lbs.
SHQGTHD16	16'	131 lbs.
SHQGTHD18	18'	144 lbs.
SHQGTHD20	20'	161 lbs.



SUPER SIX GATE

The ultimate in heavy confinement, the HiQual Super Six Gate is unequalled in the industry for strength, durability and toughness.

2 INCH	14 GAUGE	59 INCHES HIGH	6 BARS
-----------	-------------	-------------------	-----------

SPECIFICATIONS:

- Square corners, 9 3/8" spacing
- 2" x 14 gauge - Strong 14 gauge end posts
- 1" x 14 3/4" threaded L-Bolt

HINGES - INCLUDED

- 1/4" x 48" zinc plated proof coil chain
- High-Tensile, 58,000 psi steel tubing
- Notched vertical braces
- Baked-on brown powder coat finish

LIFETIME WARRANTY!

The Super Six Series has 6 rails of 2", 14 gauge material making it ideal for bull pens and heavy confinement. At 59", there are few gates as tall, and none as strong or feature packed. Extra heavy hinges, chain and latch make the Super Six Gate completely balanced to stand up to the most rigorous environment.

FEATURES:

- Versatile & long lasting hinges
- Height offers security from gate leapers
- Optimum strength with notched vertical bracing
- Ideal for heavy confinement
- Long 48" chain with security latch



58,000
PSI
POWDER
COATED
TOUGH
16
GAUGE



SUPER SIX	LENGTH	WEIGHT
SHQGTSS08	8'	102 lbs.
SHQGTSS10	10'	127 lbs.
SHQGTSS12	12'	148 lbs.
SHQGTSS14	14'	169 lbs.
SHQGTSS16	16'	193 lbs.

NOTE: Length refers to size of opening. The length of the gate is actually 5 1/2" shorter. For example, a 10' gate is actually 9' 6 1/2".

SUGGESTED APPLICATIONS:

- Rodeo arenas
- Bison, elk, stallion or bull pens
- Crowding areas
- Heavy confinement
- Feedlot & saleyard



HINGE BOLT W/O PIN	DESCRIPTION	WEIGHT
202667BRN	Super Six Bolt - No Pin	5 lbs.

These Super Six Gate hinge bolts come with collars, hardware.
Do not include a hole/pin.



HINGE BOLT WITH PIN	DESCRIPTION	WEIGHT
S202657BRN	Super Six Bolt - With Pin	5 lbs.

Made to work with HiQual Super Six Gates, these hinge bolts are 15.25" long with 12.5" of threads.



SUPER SIX HINGE KIT	DESCRIPTION	WEIGHT
S202680	Hinges and Hardware	9 lbs.

HiQual's Super Six Gates hinge kit includes hinges and hardware to get your Super Six gate working.



CATTLEMAN'S GATE

While constructed of the same material as the Heavy Duty Gate, a sixth rail was added and the spacing reduced between the lower rails.

2 INCH	16 GAUGE	52 INCHES HIGH	6 BARS
------------------	--------------------	--------------------------	------------------

SPECIFICATIONS:

- Square corners
- 9 3/8" spacing between the top 2 rails & 7" spacing between the bottom 3 rails
- 2" x 16 gauge posts and rails
- Balanced gate without weak spots
- 1/4" x 48" chain with security latch
- 1" x 14 3/4" adjustable threaded rod
- **HINGES - INCLUDED**
- Optional self latching plunger
- High-Tensile, 58,000 psi steel tubing
- Notched vertical bracing
- Baked-on brown powder coat finish



NOTE: Length refers to size of opening. The length of the gate is actually 5 1/2" shorter. For example, a 10' gate is actually 9' 6 1/2".

58,000 PSI **POWDER COATED TOUGH** **16 GAUGE**



LIFETIME WARRANTY!

The Cattleman's Gate combines features from each of HiQual's lines to provide the best of all worlds for feedlots, working corrals and exotic livestock.

FEATURES:

- Narrower rail spacing
- Plunger latch for quick & easy operation (optional)
- Extra heavy hinges for years of heavy use
- Chains & latches for extra security
- 4" taller than Heavy Duty gate

SUGGESTED APPLICATIONS:

- Sale barns
- Calving barns
- Bull pens
- Heavy confinement
- Feed lots

CATTLEMAN'S	LENGTH	WEIGHT
SHQGTCM08	8'	86 lbs.
SHQGTCM10	10'	114 lbs.
SHQGTCM12	12'	121 lbs.
SHQGTCM14	14'	139 lbs.
SHQGTCM16	16'	157 lbs.

NOTE: Length refers to size of opening. The length of the gate is actually 5 1/2" shorter. For example, a 10' gate is actually 9' 6 1/2".



GATE LATCH PLUNGER	DESCRIPTION	WEIGHT
202681BRN	For Cattleman's Gates	2 lbs.

Quick & easy operation.
Kit includes: Plunger head, handle, spring, nut and lock nut



STRIKER PLATE	DESCRIPTION	WEIGHT
SHQSTP-CM	For Cattleman's Gates	3 lbs.

Bolt on strike plate.
Designed to be utilized with HiQual Cattleman's Gates



2" PLASTIC CAP	DESCRIPTION	WEIGHT
SHQCAP2	For Any 2" HiQual Gate	.25 lbs.

2" black plastic caps.
Finish off the ends of gate tubing providing a safe edge for you and livestock

COMBO GATE

This gate is the ideal choice that works for everything including young calves, goats, sheep, dogs and llamas.

1.5 INCH	16 GAUGE	48 INCHES HIGH	3 BARS
--------------------	--------------------	--------------------------	------------------

SPECIFICATIONS:

- Square corners, 9 5/8" spacing at top
- 1 1/2" x 16 ga, 2"W x 4"H, 6 gauge mesh
- 3/4" x 12" threaded rod

HINGES INCLUDED

- 3/16" x 32" plated proof coil chain
- High-Tensile, 58,000 psi steel tubing
- Notched vertical braces
- Baked-on brown powder coat finish

This gate begins with the same basic frame as the General Duty Gate, but has the benefit of a 2" wide x 4" tall mesh panel which is welded flush within the frame for safety. The 2" x 4" vertical openings in the mesh are narrow enough to prevent your livestock from climbing up the gate.



COMBO GATE	LENGTH	WEIGHT
SHQGTCB04	4'	32 lbs.
SHQGTCB06	6'	45 lbs.
SHQGTCB08	8'	56 lbs.
SHQGTCB10	10'	69 lbs.
SHQGTCB12	12'	80 lbs.
SHQGTCB14	14'	90 lbs.
SHQGTCB16	16'	101 lbs.

SUGGESTED APPLICATIONS:

- Light confinement
- Driveways
- Kennels

NOTE: Length refers to size of opening. The length of the gate is actually 5 1/2" shorter. For example, a 10' gate is actually 9' 6 1/2".

- Wire mesh panel inset and welded flush within frame for safety.
- Narrow mesh vertical openings to prevent injury.

SIoux STEEL PRODUCTS ARE MADE IN THE USA



FIXED GATE LATCH	DESCRIPTION	WEIGHT
H204385	Dimensions: 4"x 4"x 23"	6 lbs.

Mounts to the post with four lag bolts. (Not included)



ADJUSTABLE GATE LATCH	DESCRIPTION	WEIGHT
H204386	Dimensions: 18"x4"x23"	11 lbs.

2" GATE LATCHES

HiQual Gate Latches mount directly to the post. This leaves the end of the gate smooth and reduces the chance of you or your livestock getting "hung up" on the latch.

HiQual Gate Latches can be operated from the ground or on horseback. Simply press down on the rod and the gate can be pushed open. Once through, simply swing the gate and it will latch itself shut. To prevent an ambitious horse from opening the gate, you can lift up on the rod and give it a half turn to lock it in place.

Both latches will work with any gate up to 2" in diameter.



HINGE BOLT WITH PIN	DESCRIPTION	WEIGHT
H205947BRN	General Duty - With Pin	2 lbs.

J-bolts with pin and collars- .75 - 10 thread.



HINGE BOLT W/O PIN	DESCRIPTION	WEIGHT
H205946BRN	General Duty - No Pin	2 lbs.

J-bolts with collars- 75 - 10 thread.



LIFETIME GUARANTEED GATES

- 2" HiQual Heavy Duty
- 2" HiQual Cattleman's
- 2" HiQual Super Six
- 2" Victory Gates
- 2" Victory Tall Gates

We know our gates are tough and we want you to enjoy them for a lifetime!

If a gate is ever damaged so that it cannot be used for its intended purpose, we will repair or replace at no charge to you, our customer.

If a gate is hit with a loader or backed into with a truck/tractor, the gate has to be

damaged to the point that it cannot be used as a gate to hold cattle, sheep, hogs or any other livestock. This is not a scratch or dent cosmetic warranty, it's a pass or fail warranty as to the functionality of the gate.



2" HIQUAL SUPER SIX



2" HIQUAL HEAVY DUTY

Sioux Steel Company (the "Company") warrants to the original purchaser that the livestock gates labeled through the Company's "Lifetime Guarantee Gate Program" (the "Gates") are free from defects in material and workmanship for the life of the original purchaser. No individual or entity, including the selling dealer, is authorized to make any statements or assume for the Company any liability relating to or arising from the product or its use that varies from the express terms of the Limited Lifetime Warranty.

EXCLUSIONS: The Limited Lifetime Warranty does not cover and the Company is not responsible for: (i) modification or alteration of the Gates; (ii) cosmetic damage, normal wear and tear or damage that does not hinder the functionality of the Gates, including fading of the color; (iii) damage caused by use for purposes inconsistent with its intended purpose or design; (iv) damage due to use of any parts or components not supplied by the Company.

The obligation of the Company is limited to repairing or replacing at its factory any part or component determined to its satisfaction to be defective, and all costs, expenses including transportation, and any fees are the responsibility of the customer. The customer must notify the Company of a claim by registered or certified mail within (30) days after discovery or the claim shall be deemed waived at Sioux Steel Company, 196 1/2 E. 6th Street, Sioux Falls, SD 57104. This information is not intended to be the entire Limited Lifetime Warranty for the Gates and is for informational purposes only. Please see the Company's New Product Warranty for the full Limited Lifetime Warranty.



Purchasing a HiQual Gate is like
PLANTING A TREE...

You do it for the next
GENERATION

PANELS

STRONG, DEPENDABLE PANELS FOR YOUR LIVESTOCK NEEDS

HEAVY DUTY PANELS

Available in 5' or 6' tall models, the Heavy Duty Panel line is ideal for everything from calving barns and working pens to feedlots and rodeo arenas.

5 RAILS

2 INCH	16 GAUGE	60 INCHES HIGH	5 BARS
------------------	--------------------	--------------------------	------------------

6 RAILS

2 INCH	16 GAUGE	72 INCHES HIGH	6 BARS
------------------	--------------------	--------------------------	------------------

TESTIMONIAL:

"Our contractor commented several times at the strength and ease of installation. Superior to any panels they have ever used."

Ginger Head, Horseshoe Bend, ID

The strength in HiQual panels begins with the raw material. High-Tensile, 58,000 psi steel is custom rolled to HiQual's own exacting standards. HiQual panels outperform the competition in strength and longevity.

The outstanding performance of HiQual Heavy Duty Panels is further enhanced by the notched vertical bracing system. A 1 1/2", 16 gauge tube is notched out at both ends and welded between each rail of the panel. This center bracing system acts as another end post in the middle of the panel. Strength is provided by the tubing itself and not just by a weld. Sharp edges are also eliminated making it safer for your livestock.



HD PANELS - 5 RAILS	LENGTH	WEIGHT
SHQPNHD08	8'	82 lbs.
SHQPNHD10	10'	95 lbs.
SHQPNHD12	12'	108 lbs.
SHQPNHD14	14'	125 lbs.
SHQPNHD16	16'	138 lbs.

SUGGESTED APPLICATIONS:

- Calving barns
- Confinement
- Rodeos
- Bulls, bison, draft horses

HD PANELS - 6 RAILS	LENGTH	WEIGHT
SHQPNHD08-6R	8'	89 lbs.
SHQPNHD10-6	10'	111 lbs.
SHQPNHD12-6	12'	127 lbs.
SHQPNHD14-6	14'	148 lbs.
SHQPNHD16-6	16'	164 lbs.

MATERIALS:

- 2" dia. x 14 gauge posts (11 ga. on frame gates)
- 2" dia. x 16 gauge rails

FEATURES:

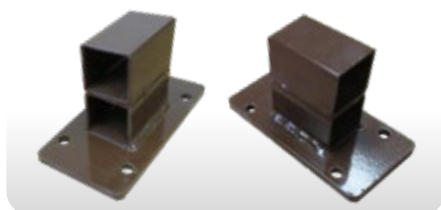
- Easy to move on 12" leg supports.
- Mud legs for extra support and extended life.
- Positive locking pin and clip connector system accommodate three way connections with no additional hardware.
- Adapters are available for all types of configurations including wall mounts and 4 way connections.

HIQUAL PRODUCTS ARE MADE IN THE USA



TUBE/WALL CONNECTOR	DESCRIPTION	WEIGHT
SHQHDP-70WPR	Panel to End Wall	7 lbs.

Connector works with HD Panels.



PIN/WALL CONNECTOR	DESCRIPTION	WEIGHT
SHQHDP-60WPR	Pin End to Wall	4 lbs.

Connector works with HD Panels.



PIN TO PIN CONNECTOR	DESCRIPTION	WEIGHT
SHQHDP-30WPR	2 Way Connector	2 lbs.

Connector works with HD Panels.



HD FRAME GATES

HiQual's Heavy Duty Frame Gates provide an extremely durable and portable gate to complement the Heavy Duty Panel line.

5 RAILS

2 INCH	14 GAUGE	92 INCHES HIGH	5/6 BARS
------------------	--------------------	--------------------------	--------------------

FEATURES:

- Square corners for safety.
- Balanced for strength, no weak spots.
- Spring loaded, plunger latch for ease of use.



HD FRAME GATE- 6 RAILS	LENGTH	WEIGHT
SHQGTFR106R	10'	247 lbs.
SHQGTFR126R	12'	282 lbs.

HD PG4 PANEL W/ 4' GATE	LENGTH	WEIGHT
SHQPG4-10 (5 Rail)	10'	157 lbs.
SHQPG4-12 (5 Rail)	12'	178 lbs.
SHQPG4-10-6R (6 Rail)	10'	177 lbs.
SHQPG4-12-6R (6 Rail)	12'	202 lbs.

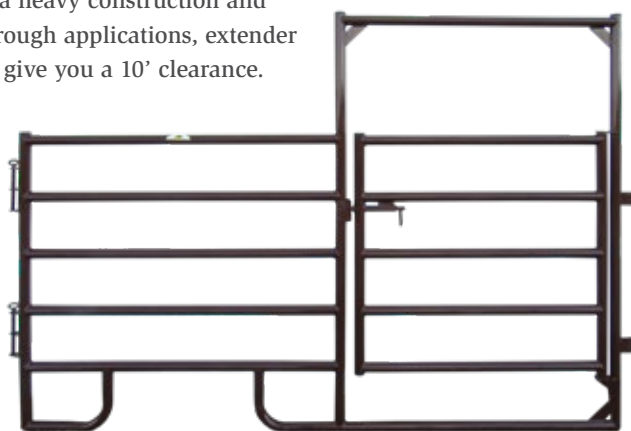
- PG 4 Panel Heights - 5 rail: 60" 6 rail: 72"
- Gate Frame Height - 84"
- Spring loaded, plunger latch for quick access



Engineered to withstand heavy crowding situations, working pens and temporary confinement. Each gate features a spring loaded, self catching plunger latch as well as extra heavy construction and bracing. For ride through applications, extender kits are available to give you a 10' clearance.

MATERIALS:

- 2" dia. x 14 gauge posts (11 ga. on frame gates)
- 1 1/2" dia. x 16 gauge braces



Calculate Number Of Panels Needed: Multiply the desired diameter by 3.14. Then divide by the length of the panels being used.

HD FRAME GATE - 5 RAILS	LENGTH	WEIGHT
SHQGTFR04	48"	91 lbs.
SHQGTFR05	60"	104 lbs.
SHQGTFR06	6'	112 lbs.
SHQGTFR08	8'	200 lbs.
SHQGTFR10	10'	228 lbs.
SHQGTFR12	12'	259 lbs.

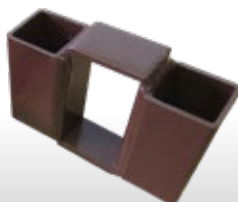
SUGGESTED APPLICATIONS:

- Crowding pens and alleys
- Feedlots
- Rodeos
- Riding arenas



PIN TO PIN CONNECTOR	DESCRIPTION	WEIGHT
SHQHDP-40WPR	4 Way Connector	3 lbs.

Connector works with HD Panels.



PIN TO TUBE CONNECTOR	DESCRIPTION	WEIGHT
SHQHDP-80WPR	Panels To Tube End	3 lbs.

Connector works with HD Panels.



TUBE TO TUBE CONNECTOR	DESCRIPTION	WEIGHT
SHQHDP-50WPR	For 2 Panels	2 lbs.

Connector works with HD Panels.

PANELS

STRONG, DEPENDABLE PANELS FOR YOUR LIVESTOCK NEEDS

RANGE PANELS

The Range Panel Series offers a lower cost product without sacrificing quality.

1.5 INCH | **16** GAUGE | **60** INCHES HIGH | **6** BARS

FEATURES:

- Secure connector is flexible on uneven ground
- Improved cattle flow with narrow bottom rail spacing
- Mud legs for added support & extended life
- Notched vertical bracing for overall strength
- Square corners prevent animals' leg from slipping between panels

RANGE PANELS	LENGTH	WEIGHT
SHQRPN10	10'	78 lbs.
SHQRPN12	12'	90 lbs.
SHQRPN16	16'	116 lbs.

These all-purpose panels are ideal for temporary stalls, perimeter fencing and roping arenas, and are made from the same material as the Flex Panel line.

BOW GATES	LENGTH	WEIGHT
SHQRPN10-G4	10' Range Panel w/ 4' Gate	104 lbs.
SHQRPN12-G4	12' Range Panel w/ 4' Gate	118 lbs.
SHQRFG04	4' Range Frame Gate	61 lbs.

SUGGESTED APPLICATIONS:

- Cattle and horses in light confinement
- Temporary stalls
- Perimeter fencing
- Roping arenas / Round pens



RAIL SPACING:

- Top 2 spaces - 10"
- Bottom 3 spaces - 7 1/2"

MATERIALS:

- 1 1/8" x 1 3/4" x 16 gauge oval tube
- 1" x 16 gauge notched vertical braces
- 58,000 high-tensile tubular steel

- The spacing between the lower three rails has been reduced to a narrow 7 1/2", making them very effective for smaller stock such as sheep, goats, and calves.
- The U-Latch connects quickly and easily with very little gap between panels, even on uneven ground.



3 WAY HOOP	DESCRIPTION	WEIGHT
SHQRPHOOP	Panel to End Wall	7 lbs.

Connector works with Range Panels.



STANDARD HOOP	DESCRIPTION	WEIGHT
H204435BRN	Pin End to Wall	4 lbs.

Connector works with Range Panels.



OVAL RUBBER CAP	DESCRIPTION	WEIGHT
H204438	Range/Flex Panels	.25 lbs.

Finish off the ends of panel tubing.



FLEX PANELS

The Flex Panel gets its name from the patented Flex Connector System.

1.5 INCH	16 GAUGE	72 INCHES HIGH	6 BARS
--------------------	--------------------	--------------------------	------------------

FEATURES:

- Rubber connector reduces noise and absorbs impact
- Versatile and quick attachment to other panels and on uneven ground
- Lightweight, easily portable
- Longer life connectors with UV Inhibitors
- Easy to move on 12" leg supports
- Up to 4 connectors per post
- Less than 1" gap between panels

BOW GATES	LENGTH	WEIGHT
SHQPNFX10-6	10'6 Rail Flex Panel	79 lbs.
SHQPNFX12-6	12'6 Rail Flex Panel	90 lbs.
SHQPNFXPG10-6	10'6 Rail PGF Panel	105 lbs.
SHQPNFXPG12-6	12'6 Rail PGF Panel	118 lbs.

Developed exclusively for HiQual Manufacturing. Safety is the most important factor when considering a premium working panel and there is no safer product available than the HiQual Flex Panel. For heavy confinement areas an additional set of connectors may be added to the panel, effectively doubling its strength.

SUGGESTED APPLICATIONS:

- Horses in light confinement
- Round pens
- Portable pasture panels



RAIL SPACING:

- 9 3/4" spacing between rails with Flex Connectors
- The Flex Connectors act as built-in shock absorbers and will stretch and spring back upon impact.
- Constructed of patented hi-density molecular rubber, they have built in U.V. inhibitors and work evenly under all types of weather conditions.

MATERIALS:

- 1 1/8" x 1 3/4" x 16 gauge oval tube
- 1" x 16 gauge notched vertical braces
- 58,000 high-tensile tubular steel



FLEX CONNECTOR	DESCRIPTION	WEIGHT
SHQMCFPRC	Connector Strap	.5 lbs.

Connector works with Flex Panels.



FLEX CONNECTOR	DESCRIPTION	WEIGHT
SHQMCFCON	Strap With Pin	1 lbs.

Connector works with Flex Panels.



FLEX CONNECTOR	DESCRIPTION	WEIGHT
SHQMCFPCH	Pin Only	.5 lbs.

Connector works with Flex Panels.

ROUND PENS



FEATURES:

- Patented Flex Connector System
- Connectors flex and absorb shock on impact
- User friendly, durable polymer rubber with UV inhibitors
- Less than 1" gap between panels for safety
- Connect to any panel up to 2" in diameter
- Ideal for uneven ground
- Square corners on panels for safety
- Ride through Frame gate for safety and convenience
- 6' tall panels present an imposing barrier and prevent jumping

TESTIMONIAL:

"I've been working with horses all over the world for years, and when I show up for a clinic and see a HiQual Round Pen, I couldn't be happier. It's the safest portable round pen money can buy!"

Buck Brannaman
Renowned Clinician and Technical
Adviser for "The Horse Whisperer"

ROUND PEN PACKAGES	DESCRIPTION
SHQRNDPEN40	40' Round Pen Package
SHQRNDPEN60	60' Round Pen Package

40' Round Pen Package Includes	(12) 10' x 6' tall, 6 rail Flex Panels (1) 6' x 10' tall Flex Frame Gate (26) Flex Straps
60' Round Pen Package Includes	(15) 12' x 6 rail Flex Panels (1) 6' x 10' tall Flex Frame Gate (32) Flex Straps

Training horses takes a major investment both in time and facilities. It is critical that your animal be safe, comfortable and secure in its surroundings in order for the training experience to be most effective. HiQual Round Pens were designed to provide both the horse and trainer the safest possible environment.

While a round pen can be constructed out of almost any panel or fencing material, HiQual is confident that you will see the benefits of investing in a round pen constructed with Flex Panels.

The 6' tall panels present an imposing barrier to your horse and reduce the chance that your horse will challenge the panels. If your horse did manage to get on top of a panel, the square corners, tightly fitted Flex Connectors, and rubber capped posts dramatically reduce the chance of injury and costly vet bills.



HEAVY DUTY FEED THRU PANELS



Stout is a word often used to describe HiQual Feed Thru Panels. With a 2", 14 gauge frame, there are few products which can compare for strength and toughness.

2 INCH | **14** GAUGE | **60** INCHES HIGH | **2** BARS



The 10' and 12' panels even have 2" x .125 wall round tube rail in the middle for added support. Heavy Duty Feed Thru Panels can be configured as stand alone feeders or as part of a fence line. The balanced design and extra heavy construction stands up well to the heavy pressure.

NOTE:

Feed Thru Panels will even connect to HiQual Heavy Duty Panels with the HiQual Pin and Clip Connector System.

MATERIALS:

- 2" x 14 ga. frame
- 16 1/2" x 16 ga. sheeting
- 1 1/2" x 16 ga. slant bars



BOW GATES	LENGTH	WEIGHT
SHQPNFT06-2	6' Feed Through Panel	89 lbs.
SHQPNFT08-2	8' Feed Through Panel	113 lbs.
SHQPNFT10-2	10' Feed Through Panel	139 lbs.
SHQPNFT12-2	12' Feed Through Panel	162 lbs.

Panel Length	6'	8'	10'	12'
Number of Feeding Stations	3	5	7	9
Weight	83 lbs	113 lbs	139 lbs.	162 lbs.
Height	60"	60"	60"	60"
Size of Feeding Stations	15 13/16" wide	13 5/8" wide	12 11/16" wide	12 3/16" wide

CONTINUOUS FENCING

SAFE, SMOOTH-EDGED FENCING OPTION



TESTIMONIAL:

"The HiQual continuous fencing is easy to install and offers the producer an attractive, no maintenance fencing system. We install it because of the safety it offers to both the livestock and handlers. It provides a highly visible and physically strong barrier to discourage animals from challenging the fence."

Peter Dopheide
Under the Sun Enterprises, Winnipeg, MB

HiQual Continuous Fence combines top notch quality, simple installation and a visually appealing finish at a very cost effective price. Whether you're building corrals and pens, putting in an arena or just want an attractive yard fence, HiQual has a perfect configuration. The key to the Continuous Fence System is the innovative connection. Each 10' or 20' panel has one end which is "swaged" down, allowing it to slip into the next panel for a smooth yet solid joint. The HiQual notched vertical bracing system is used for added support between your posts. For durability and appearance, each panel is finished with a high quality, baked on powder coat paint. Premium quality, safety, appearance and ease of installation are reasons why HiQual's Continuous Fence packages are in such great demand throughout North America.

2" FENCING	5 RAILS	6 RAILS
HEIGHT	47.5"	59"
WEIGHT (20')	146 lbs.	175 lbs.
WEIGHT (10')	77 lbs.	93 lbs.

1.5" FENCING	4 RAILS	5 RAILS
HEIGHT	36"	47.5"
WEIGHT (20')	80 lbs.	100 lbs.
WEIGHT (10')	46 lbs.	58 lbs.

WHY BUY HIQUAL FENCING?	Continuous Fence	Sucker Rod	Wood Fence	Vinyl Fence
Easily Installed	•			
Weather Proof	•			
Long Life	•	•		
Smooth Corners	•			
Powder Coat Paint	•			
Easily Uninstalled	•			•
1 Year Warranty	•			•

HIQUAL PRODUCTS ARE MADE IN THE USA



FEATURES:

- Very versatile, even on uneven ground.
- Easy installation with clips and lag bolts to posts and prefabricated panels.
- The unique connecting system allows the panels to move as the ground expands and contracts when the weather changes, without causing damage or requiring costly repairs.
- More durable than lumber or vinyl.
- Steel construction allows the fence to be low maintenance & resist weather.
- Round tubing is safe with no sharp edge. Corners are rounded.
- Mounts at any height to suit a wide variety of applications.
- Maintains re-sale value, and is easily uninstalled.

PRODUCT	2" X 16 GA FENCING
SHQFC2510	2" 5 Rail Continuous Fence 10'
SHQFC2520	2" 5 Rail Continuous Fence 20'
SHQFC2610	2" 6 Rail Continuous Fence 10'
SHQFC2620	2" 6 Rail Continuous Fence 20'
SHQFCONB1	2" Continuous Fence 45° Elbow
SHQFCONB2	2" Continuous Fence 90° Elbow
SHQFCONP2	2" 5 Rail Continuous Fence Swaged End Post
SHQFCONP1	2" 5 Rail Continuous Fence Open End Post
SHQCF2-SW6	2" 6 Rail Continuous Fence Swaged End Post
SHQCF2-OE6	2" 6 Rail Continuous Fence Open End Post
SHQFCONC2	2" Clip (pack of 50)

PRODUCT	1.5" X 16 GA FENCING
SHQFC1410	1½" 4 Rail Continuous Fence 10'
SHQFC1420	1½" 4 Rail Continuous Fence 20'
SHQFC1510	1½" 5 Rail Continuous Fence 10'
SHQFC1520	1½" 5 Rail Continuous Fence 20'
SHQFCONB1-1.5	1½" Continuous Fence 45° Elbow
SHQFCONB2-1.5	1½" Continuous Fence 90° Elbow
SHQCF1.5-4R	1½" 4 Rail Continuous Fence Swaged End Post
SHQCF1.51/2-4R	1½" 4 Rail Continuous Fence Open End Post
SHQFCONP2-1.5	1½" 5 Rail Continuous Fence Swaged End Post
SHQFCONP1-1.5	1½" 5 Rail Continuous Fence Open End Post
SHQFCONC1.5PKG	1½" Clip (pack of 50)

MATERIALS:

- Constructed of 16 gauge hi-tensile tubular steel rated at 58,000 psi and is available with 2" or 1 ½" rails.
- Braces: 1 ½' x 16 gauge round, notched, & welded.
- Connection: Swaged end inserts into open end of next panel.

EASY INSTALLATION!

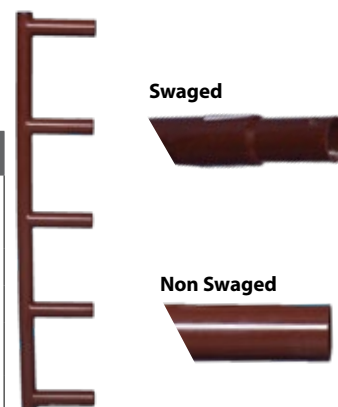
SUGGESTED APPLICATIONS:

- Perimeter fencing
- Rodeo/roping/riding arenas
- Pastures
- Corrals
- Yard fencing



2" - 45°: SHQFCONB1
2" - 90°: SHQFCONB2
1½" - 45°: SHQFCONB1-1.5
1½" - 90°: SHQFCONB2-1.5

Continuous Fence Elbows are available in a 90 or 45 degree configurations and a flex elbow for uneven surfaces or hills. All elbows are available in 2" or 1 ½".



End Posts are used to terminate a straight run of fencing and eliminate any sharp or open edges which could cause injury to people or livestock. Available in 1 1/2" or 2" with swaged or open ends.

FEEDERS

STRONG, DEPENDABLE FEEDERS FOR YOUR LIVESTOCK NEEDS

TOMBSTONE SAVER

The Tombstone Saver Feeding System is recognized by ranchers across North America as the cutting edge in feeding technology.

TESTIMONIAL:

"Because of this feeder's weight, my stock can't push it around, and with the sloped tombstones, there is little or no waste. This feeder should pay for itself in one season."

Nevin Doud, Kipling, SK

The unique Tombstone Hoop design was motivated by years of customer feedback saying that traditional feeders wasted too much feed and didn't stand up to the abuse of hungry animals.

The patented sloped design of the Tombstone Saver Hoops create a 12" void between the bale and the feeder skirt. As animals feed, the loose hay falls inside of the feeder instead of on the ground where it is wasted. Over the course of a season, this can add up to thousands of dollars. The other added benefit is that the animal can't get any leverage when pressuring the feeder. By reducing this stress, you now have a product which will last up to five times longer than slant bar feeders. Pound per pound, there is no better value.

SUGGESTED APPLICATIONS:

- Cow/calf operations
- Horses
- Dairy & horned cattle



15
FEEDING STATIONS

368
POUNDS

9'2"
BOTTOM DIAMETER

7'2"
TOP DIAMETER

FEATURES:

- Documented feed savings of 60 lbs. per 1,000 lbs fed
- Sloped-in hoops keep cattle from pressuring feeder and causing damage
- Open top eliminates neck rub and hair loss
- Accommodates large bales up to 6' in diameter
- 15 feeding stations mean each feeder will accommodate up to 25 head
- Mud legs keep feeder up off the ground to prevent rusting
- **OPTION:** Hinge kit allowing feeder to open up & swing out for easy filling



HINGE KIT	DESCRIPTION	WEIGHT
SHQTSHING	Saver Feeder Kit	7 lbs.



TOMBSTONE SAVER	DESCRIPTION
SHQTSFDR	Tombstone Saver Feeder
SHQTSSVNT	Tombstone Saver Neck Tube
SHQTSHING	Hinge Kit



TOMBSTONE BULL FEEDER



12 FEEDING STATIONS	427 POUNDS	9'8" BOTTOM DIAMETER	7'6" TOP DIAMETER
-------------------------------	----------------------	--------------------------------	-----------------------------

SUGGESTED APPLICATIONS:

- Bulls and cattle over 1,500 lbs
- Buffalo
- Draft horses
- Elk
- Horned cattle

TOMBSTONE BULL	DESCRIPTION
SHQTSBULLFDR	Tombstone Bull Feeder

FEATURES:

- Wider spacing between hoops and increased strength
- Accommodates up to 20 head - Patented design reduces feed waste
- Sloped-in hoops keep animals from pressuring the feeder and causing damage. Open top eliminates neck rub and hair loss
- Replacement hoops and optional hinge kit available
- Mud legs to keep the feeder off the ground

The HiQual Bull Feeder features the same basic design as the Tombstone Saver, but is built larger and heavier for bulls.

TESTIMONIAL:

"I needed a feeder that my bulls couldn't bust up. The HiQual bull feeder is strong, my bulls don't hurt this one."

Ervin Sock & Sons, Hay Lakes, AB

Replacing bale feeders has long been considered an annual expense, especially when feeding bulls or buffalo. Today, there is an option which not only stands up to these fractious animals, but reduces feed costs as well.

The stronger hoops and wider spacing easily accommodate a bulls neck with out rubbing. The sloped hoop design is the main reason why you don't see HiQual Bull Feeders in the junk pile with all of the other feeders each season.

The sloped hoop design prevents the bulls from pressuring the feeder, even when you get several aggressive animals trying to feed at the same time. The Bull Feeder is so versatile and strong that it is one of the few feeders that is warranted for use with buffalo.



NECK TUBE	DESCRIPTION	WEIGHT
S186438BRN	For Bull Feeder	7 lbs.

FEEDERS

STRONG, DEPENDABLE FEEDERS FOR YOUR LIVESTOCK NEEDS

GRAIN BUNK

Like all HiQual products, the Grain Bunks are built for maximum durability.



GRAIN BUNK	DESCRIPTION	WEIGHT
SHQDFBUNK	14 Bushel Capacity	152 lbs.

SUGGESTED APPLICATIONS:

- Feeder for all types and sizes of animals

In another industry first, HiQual's all steel bunks use corrugated side panels to dramatically increase strength and longevity. With many round bottom bunks, smaller calves climb inside and are unable to get out. HiQual's v-bottom is easy to clean and allows the calf to stand up and get out. Drain holes at each end and skid legs are also standard features.

FEATURES:

- Strong Heavy Duty all steel construction with corrugated sides.
- V bottom with drain holes ensures total feed consumption & easy clean-up.
- Optional connector keeps bunks in line.

MATERIAL:

- 16 gauge, corrugated sheet metal, hemmed & continuous

DIMENSIONS:

- 11 1/2' long x 30" wide x 22" high x 9" deep
- 18 cubic feet or 14 bushel capacity

50,000
PSI

16
GAUGE
POWDER
COATED
TOUGH

GRAIN & SILAGE BUNK

Same rugged construction as the HiQual Grain Bunk but the capacity is increased from 18 cubic feet to 32 cubic feet.



SILAGE BUNK	DESCRIPTION	WEIGHT
SHQFDSBUNK	26 Bushel Capacity	188 lbs.

SUGGESTED APPLICATIONS:

- Feeder for all types and sizes of animals

They are constructed from a single sheet of metal with corrugated sides for extra strength. You won't be replacing poly liners each year with HiQual Bunks.

The skid legs keep the bunks off the ground so they don't freeze down in winter and are easier to move.

FEATURES:

- Strong Heavy Duty all steel construction with corrugated sides.
- V bottom with drain holes ensures total feed consumption & easy clean-up.
- Optional connector keeps bunks in line.

MATERIAL:

- 16 gauge, corrugated sheet metal, hemmed & continuous

DIMENSIONS:

- 11 1/2' long x 30" wide x 22" high x 15" deep
- 32 cubic ft or 26 bushel capacity



Connects
multiple
bunks in
line.
Part#:
H204382

50,000
PSI

16
GAUGE
POWDER
COATED
TOUGH



CLASSIC CALVING PEN

The HiQual Classic Calving Pen provides a safe environment for the animal and operator throughout the calving process. Many patented features like the double acting gate and spring loaded stanchion adjustments are on this unit to make it easy to use, safe for the livestock and operator.

10'W x 12'L x 7'H
OUTSIDE DIMENSIONS

8'x 10' to 10'x 10'
INSIDE DIMENSIONS

1,235 LBS.
WEIGHT



CALVING PEN	DESCRIPTION
SHQCLCVPN	Calving Pen System
SHQCLPNFLR	Calving Pen Floor

PART	MATERIAL
Head Gate Cable	1/4" galvanized aircraft cable
Head Gate Stanchions	2 3/8" x .188 steel tubing
Entrance Panel: Frame	2 1/4" x 11 gauge round
Entrance Panel: Gate	2" x 16 gauge round
Side Panel	2" x 14 gauge round & 1 1/2" x 16 gauge square with 105" L x 36" H sheeting
Front Panel: Door Posts & Rails	2" x 14 gauge round
Front Panel: Posts & Rails	2" x 11 gauge round
10' Panel: Rails	2" x 16 gauge round
10' Panel: Posts	2" x 14 gauge round

FEATURES:

- Improved cattle flow with narrow bottom rail spacing
- Secure, versatile connector is flexible on uneven ground
- Mud legs for added support & extended life
- Notched vertical bracing for overall strength
- Square corners prevent animals' leg from slipping between panels

OPTIONAL: CALVING PEN FLOOR ►

When calving pens cannot be secured to a floor or walls, the calving pen floor will prevent cattle from moving the pen. 2 steel traction bars.

Dimensions: 1 1/2" H x 36" square

Weight: 81 lbs.

- Side Tubes: 1 1/2" x 16 gauge square
- Sheeting: 10 gauge
- Traction Bars: 1" x 14 gauge square



SUGGESTED APPLICATIONS:

- Cow/calf operations
- Show cattle being trained to lead
- Show cattle fitting



HYDRAULIC CALF CHUTE



The latest HiQual innovation! The Hydraulic Calf Chute also works as a tipping table to work up to 800 lbs. calves.

Hydraulic squeeze and head gate along with spring loaded drop-down fold-away bars to access calf when in tipping position. 10" squeeze width at the floor with a 1" - 25" squeeze width at the top bar.

Drop-down doors for access to calf when in regular stand-up chute position. Hydraulically operated scissor-style tailgate to prevent calf from entering when in alley.

Hydraulic Calf Chute features baked on brown powder coat paint and an eight year warranty!

CALF CHUTE	DESCRIPTION
SHQHYCFCHT-LH	Left Side Hydraulics
SHQHYCFCHT-RH	Right Side Hydraulics

TESTIMONIAL:

"I'm 64 years old and the 5th generation in the cattle business. In my life we have branded and marked calves several ways. The HiQual Hydraulic is the most efficient, quickest way to make it the easiest on the calves. It's also the most energy efficient way for your work crew to work which puts money in our pockets."

Mike Barley, Barley's Flying B Ranch

800 LB. CALVES

7'2"L x 5'11"H x 6'5"W
OUTSIDE DIMENSIONS WITH HYD CONTROLS OUT

1,342 LBS.
WEIGHT

FEATURES:

- Scissor style tailgate is easy to operate and provides much better control than traditional guillotine gates
- Neck extender holds tension with gas filled struts
- Complete chute tilts with hydraulics to 78 degrees, allowing some gravity to be used for weight to be at the bottom of the chute
- 25' of hydraulic hose for use with any type of power pack
- Hydraulic controls fold away for easy storage
- Table side has 4 fold down doors for access to calf when in chute position
- Working side of the chute has spring loaded bars for ease of access to the calf



GAS SPRING	DESCRIPTION	WEIGHT
SHQILA-6	200 lb. Spring	.25 lbs.

TRANSPORT TRAILER:

Hydraulic controls fold away for ease of transport with the optional trailer kit manufactured to move the Hydraulic Calf Chute from one destination to another.

Optional Transport Trailer
Product#: SHQHYDTRCFCH-2



WORKING EQUIPMENT

EQUIPMENT THAT WORKS AS HARD AS YOU DO

CLASSIC WORKING SYSTEM

- All cattle & bison operations
- Arenas
- Large cow calf operations
- Feedlots



TESTIMONIAL:

"I purchased a HiQual Classic Working System... to replace our old wooden facility. I've found the Classic System to be much stronger, safer, and more efficient than our old system. We set-up our system in an "S" curve and the cattle flow really well and we can process our cattle in a third of the time. Overall it has been a very good investment."

Ross Enggraf, Hettinger, ND

The Classic Working System is designed for the heavy use of modern feedlot applications, yet is priced for the traditional cow/calf operator. This was accomplished with new and innovative design techniques and production processes. While we didn't reinvent the wheel, we certainly made it better. Today's livestock industry not only demands quality, but versatility as well. The flexibility of the Classic Working System meets all of these demands. With the ability to go from a left to right curve or even into an "S" shape, the HiQual system can fit almost any scenario.

Another critical criteria is the need for efficiency and reduced labor. The HiQual system was designed to get the most work done, with the least amount of labor. Cattle flow is improved when noise is reduced and this is accomplished with silicone sealant under the sheet metal and rubber bumpers between moving parts.



46.5" HEADGATE
CABLE (NEW STYLE)

H206213

WEIGHT

2 lbs.



BALL STUD

WEIGHT

SHQILA-7

0.1 lbs.



PIN-LOCK/
GAS SPRING

WEIGHT

H205949

0.1 lbs.

CLASSIC EQUIPMENT	PART#	WEIGHT
CROWDING TUB	SHQCTUB	1,450 lbs.
IN-LINE GATE	SHQINL (L/R)	140 lbs.
SORT GATE	SHQSORT	465 lbs.
CROWD ALLEY - CURVED	SHQCAC	1,490 lbs.
CROWD ALLEY - STRAIGHT	SHQCAS	1,592 lbs.
ALLEY FRAME - LEFT/RIGHT	SHQCAF	195 lbs.
ALLEY FRAME (w/Backstop)	SHQCAFM	233 lbs.
ALLEY BACKSTOP	SHQCABS	38 lbs.
ALLEY PANEL - STRAIGHT	SHQCAP(S)	181 lbs.
ALLEY PANEL SHORT - CURVED	SHQCAP(IS)	137 lbs.
ALLEY PANEL LONG - CURVED	SHQCAP(OS)	147 lbs.

HiQual's research and development staff have worked with ranchers, feedlots and veterinarians to bring the safest, most efficient and innovative products to the market.



CROWDING TUB

Diameter: 20' • Crowd Gate: 10' L, 5'5" H • Panels: 6'6" H

- 20' Diameter for high capacity and increased productivity.
- Universal Latch on Crowd Gate locks in any position for much improved operator safety.
- Universal Latch is rubber coated for quiet operation and improved cattle flow.
- Crowd Tub is reversible for left or right hand operation.
- Mud legs keep panels above ground and reduce rusting.
- Crowd Gate uses corrugated steel to increase strength and reduce noise.
- Heavy Duty Center Post has grease zerks for smooth operation in all types of weather.

Free working system design and layout is available. Contact your local HiQual Dealer or TM for more information.



CROWDING ALLEY

30' Long • 3'6" Wide • 7' High

- Can be configured in a left or right hand curve, or even an "S" curve with no additional components.
- The alley panels are 7' tall while the lower height sheeting provides access to the cattle in the alley. It also eliminates the need for a costly and dangerous catwalk.
- The panels are suspended above the ground so they do not bind up with mud or snow. They are also sealed with silicone to reduce noise and rusting.
- The "butterfly" hinge system allows for quick and easy one-handed width adjustment from 18" to 30".
- Overhead backstops adjust for all sizes of cattle & safely prevent cattle from backing up in the alley.



SORT GATE

6' Long • 7' High • 39" Wide

- The HiQual Sort Gate allows you to direct the flow of cattle down a main alley or to an alternate alley or loading chute.
- A gas spring holds the gate open in the desired direction and prevents the cattle from opening it.
- A chain and latch holds the gate to one side when sorting down the alternate alley.
- Rubber mounts and corrugated steel reduce noise, add considerable strength and improve cattle flow.



IN-LINE GATE

1' Long • 7' High • 4' Wide

- Scissor style gate provides increased alley control by preventing livestock from getting over, around or under.
- The linkage assembly lifts the gates up and out of the mud so they won't freeze down or rust in the winter.
- Gas spring assist makes gate easier to operate and holds it in the open position.
- The In-Line Gate can be operated from either side and is reversible for left or right hand operation.



**GAS SPRING
60LB - CYLINDER**

SHQILD-6

WEIGHT

0.25 lbs.

WORKING EQUIPMENT

EQUIPMENT THAT WORKS AS HARD AS YOU DO



SQUEEZE CHUTE

Designed to accommodate virtually all your cattle from young calves to bigger bulls. This equipment is designed to help keep your livestock calm while being worked.

SPECIFICATIONS

- 84" tall x 38" wide x 12' long
- 9' squeeze chute
- 3' palpation cage
- 29" inside width (squeezes to 12")
- 40 grease zerks
- All panels are a slam latch design
- Both sides open completely
- Controls can be mounted & ran from either side of your operation

SYSTEM INCLUDES:

- Cleated Rubber Floor
- Palp Cage
- Slick Door
- Auto or Manual Head Gate

STAND ALONE ITEM

Does Not Connect or Attach to HiQual's Classic Working Equipment Pieces



Squeeze Chute w/ Auto Head Gate



Squeeze Chute w/ Manual Head Gate

SQUEEZE CHUTE	PART#	WEIGHT
W/AUTO HEAD GATE	S191440BRN	2,150 lbs.
W/ LEFT HAND MANUAL HEAD GATE	S191440MLHBRN	2,250 lbs.
W/RIGHT HAND MANUAL HEAD GATE	S191440MRHBRN	2,250 lbs.

Squeeze Lever

Swings away allowing the side of the chute to open even when squeezed down.

Full Opening Side Doors

If an animal drops down, you have the ability to release an animal out the side.

Parallel Sides

Squeeze the animal at the ribs. This helps to keep the animal more stable, comfortable, and quiet.

Cleated Rubber Floor

Cleated rubber floors strategically to keep animals from slipping. Flooring is quieter and more natural for animals to walk on.



LEFT HANDED Manual Head Gates Are Standard

Left or right handed operations are determined by facing forward the same way cattle would be facing in the head gate.



12" Injection Door

Our injection door is the largest in the industry, allowing for greater access to the neck area making vaccinations and injections safer and easier for both the animal and the processors.

3 Drop Down Doors

Each door has blinders on them to keep the animal focused in the right direction. Doors go all the way down giving you complete access to the upper 2/3rds of the animal.

Bottom Access Nursing Doors

Lower nursing doors open for new born calves or lower extremity access.

NOSE BAR



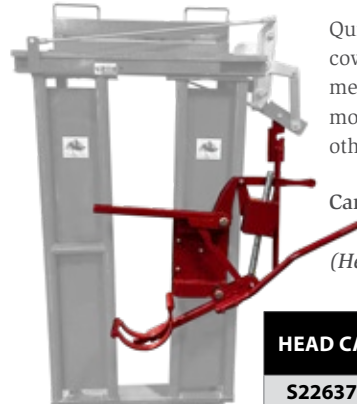
Bar swings across the front to hold the head in a firm position while working. Bars swing out of the way for animal exit.

Can only be utilized with automatic head gates. (Head gate sold separately.)



NOSE BAR	DESCRIPTION	WEIGHT
S229088RD	Nose Bar	41 lbs.

HEAD CATCH



Quickly & easily secure a cow's head for administering medication, replacing tags, monitoring well being, and other tasks.

Can only be utilized with manual head gates. (Head gate sold separately.)



HEAD CATCH	DESCRIPTION	WEIGHT
S226378RD	Head Catch	81 lbs.



NECK EXTENDER	DESCRIPTION	WEIGHT
H204649	Short/Adjustable	10 lbs.



NECK EXTENDER	DESCRIPTION	WEIGHT
H205766BRN	Long/Fixed	11 lbs.



NECK EXTENDER	DESCRIPTION	WEIGHT
H205767BRN	Long/Adjustable	13 lbs.



ELECTRIC MOTOR	DESCRIPTION	WEIGHT
H204182	Hydraulic Squeeze	50 lbs.



POWER UNIT PUMP	DESCRIPTION	WEIGHT
H204199	2 stage, 16 GPM	12 lbs.

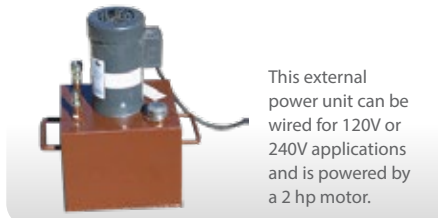


NECK EXTENDER	DESCRIPTION	WEIGHT
H204648	Short/Fixed	9 lbs.



Powered by a 6.5 hp Honda engine, this unit allows you to use your Hydraulic Chute in even the most remote location.

GAS POWER UNIT HONDA	DESCRIPTION	WEIGHT
SHQHYDPUG	28" L • 17" W • 17" H	98 lbs.



This external power unit can be wired for 120V or 240V applications and is powered by a 2 hp motor.

ELECTRIC POWER UNIT	DESCRIPTION	WEIGHT
SHQHYDPUE	14" L • 12" W • 26" H	115 lbs.



VALVE BANK W/HANDLES	DESCRIPTION	WEIGHT
H204646	4 Valve Assembly	11 lbs.



HYDRAULIC CYLINDER	DESCRIPTION	WEIGHT
H205788	8" Cylinder (Large)	13 lbs.



HYDRAULIC CYLINDER	DESCRIPTION	WEIGHT
H205787	6" Cylinder (Small)	7 lbs.



SHOP ONLINE AT
www.agpartsdirect.com

Search local dealerships or buy direct online.

MSRP product pricing featured along with additional product information. Replacement parts for gates, working equipment, feeders, waterers and more.

WORKING EQUIPMENT

EQUIPMENT THAT WORKS AS HARD AS YOU DO

XL HYDRAULIC SQUEEZE CHUTE

Designed to provide quality, strength and features demanded by the largest feedlots at a price the traditional rancher can afford! HiQual's XL (extra long) Hydraulic Chute was designed for veterinarians, cow/calf producers and feedlot operators who need easy access to the rear of the animal. The XL Chute comes with a built-in palpation door on the operator's side.

XL HYDRAULIC SQUEEZE CHUTE	PART#	WEIGHT
CHUTE W/ PALP LEFT	SHQXLHYD-LH	2,185 lbs.
CHUTE W/ PALP RIGHT	SHQXLHYD-RH	2,185 lbs.
ALLEY EXTENSION KIT	SHQALLEX	176 lbs.





FEATURES:

- Width adjusted hydraulically for safer and more effective squeeze.
- Hydraulic cylinder located in center of squeeze gate.
- Drop door frame made of 1.5" sq. 16 gauge tubing.
- The hydraulic controls include a pressure relief valve for animal safety.
- Self-latching drop tubes allow safe and easy access for branding and pouring.
- Side boards fold down to allow safe access to a cow's udder or hooves.
- Veterinary bag hangers on lever side.

Neck extender is hydraulically activated and holds head securely.

Width adjusted hydraulically for safer and more effective squeeze.

Built-in palpation door allows operator to safely enter chute behind animal.



A wider stance and a 6,000 lb. torsion axle helps it tow easily with virtually no sway. To load the chute, you simply back up the transport deck in its tipped position.

As you reverse, the chute rolls up onto the deck.

Once over center, the deck returns to its flat position and the chute is winched forward for the last foot or so. Straps are provided to secure the chute to the transport.

The transport works with both the regular and XL hydraulic chutes.

This simple system allows the chute to be loaded or unloaded in just a few short minutes.



HYDRAULIC TRANSPORT KIT

▼ Optional Hydraulic Transport Trailer
Product#: SHQHYDTRKXL

HORSE STALLS

FAVORITE OF HORSE ENTHUSIASTS EVERYWHERE

ORIGINAL STALLS

HiQual's Original Horse Stall Series has been a customer favorite since its introduction over 25 years ago. These stalls combine the natural beauty of wood with the modern features and quality construction synonymous with the HiQual brand.

HiQual Original Stalls are constructed with 2" hi-tensile, 14 gauge round tubing with an astonishing 58,000 psi rating. Like all HiQual products, the stalls are finished with an extremely high quality, baked on powder coat paint.

NOTE:

Connectors sold separately. Lumber not included.



VERTICAL RAIL DIVIDER



SOLID DIVIDER



STALL FRONT

FEATURES:

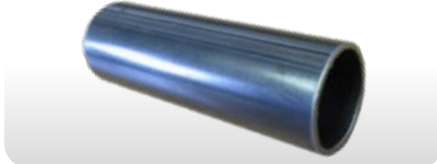
- Safe, heavy duty construction
- 4' stall door on aluminum rollers with bearings is quiet, rolls easily and does not rust
- Available with door on reverse side
- Rolling door has large drop down grill
- Feed door hinges out for easy feeding
- Can be set-up as a free standing box stall
- Wood easily inserts into track vertically

12' ORIGINAL STALLS	PART#	DIMENSIONS	WEIGHT
12' ORIGINAL FRONT	SHQHS12FR	140.5" L X 85" H X 2" D	243 lbs.
12' ORIGINAL FRONT REVERSED	SHQHS12FRREV	140.5" L X 85" H X 2" D	243 lbs.
12' SOLID DIVIDER	SHQHS12SD	140.5" L X 85" H X 2" D	171 lbs.
12' VERTICAL RAIL DIVIDER	SHQHS12VD	140.5" L X 85" H X 2" D	155 lbs.

10' ORIGINAL STALLS	PART#	DIMENSIONS	WEIGHT
10' ORIGINAL FRONT	SHQHS10FR	116.5" L x 85" H x 2" D	216 lbs.
10' ORIGINAL FRONT REVERSED	SHQHS10FRREV	116.5" L x 85" H x 2" D	216 lbs.
10' ORIGINAL SOLID DIV	SHQHS10SD	116.5" L X 85" H X 2" D	145 lbs.
10' ORIGINAL RAIL DIVIDER	SHQHS10VD	116.5" L X 85" H X 2" D	132 lbs.



GATE LATCH ROD	DESCRIPTION	WEIGHT
H206478	Original Stall Latch	1 lbs.



LATCH TUBE	DESCRIPTION	WEIGHT
H206477	Horse Stalls	.25 lbs.



ROLLER WITH BEARING	DESCRIPTION	WEIGHT
H206217	Aluminum	1 lbs.



TRADITIONAL HORSE STALLS



Traditional Stall Front comes standard with the Feed Grill Door.

12' TRADITIONAL STALLS	PART#	DIMENSIONS	WEIGHT
12' TRADITIONAL FRONT	SHQHS12TDFR	140.5" L X 85" H X 2" D	215 lbs.
12' TRADITIONAL FRONT REV	SHQHS12TDFRREV	140.5" L X 85" H X 2" D	215 lbs.
12' SOLID DIVIDER	SHQHS12TDSD	140.5" L X 85" H X 2" D	154 lbs.
12' VERTICAL RAIL DIVIDER	SHQHS12VSDIV	140.5" L X 85" H X 2" D	182 lbs.

10' TRADITIONAL STALLS	PART#	DIMENSIONS	WEIGHT
10' TRADITIONAL FRONT	SHQHS10TDFR	116.5" L X 85" H X 2" D	196 lbs.
10' TRADITIONAL FRONT REV	SHQHS10TDFRREV	116.5" L X 85" H X 2" D	196 lbs.
10' SOLID DIVIDER	SHQHS10TDSD	116.5" L X 85" H X 2" D	131 lbs.
10' VERTICAL RAIL DIVIDER	SHQHS10VSDIV	116.5" L X 85" H X 2" D	155 lbs.

STALL FEATURES:

- 4' stall door on aluminum rollers with bearings is quiet, rolls easy and does not rust
- Drop down grill is recessed into rolling door & has grease zerks to maintain smooth operation
- Horse proof latch is mounted flush with the door
- Also available with the door on the reverse side

The Traditional Stall Series is a favorite of the equine professional looking for the highest quality and features at a surprisingly affordable price. The latch on the 4' rolling door was updated to an easier to use and more ergonomic design. The framework is constructed from 2" x 2" x 16 ga. square tubing. The 1" round x 16 gauge vertical rails are cut square and welded flush to the upper and lower frames. The daily task of feeding is a chore which few people enjoy. However, the new HiQual Tilt Out Feeder was designed to make the feeding process much more efficient and user friendly. Have you ever felt the annoying itch of fresh hay as it works its way down the collar of your shirt? The Tilt Out Feeder releases from the top and tilts down and out into the alley allowing easy access, less lifting and much less itching. It can also be dropped all of the way down for easy cleaning.

PRODUCT	DESCRIPTION
SHQTOFDR	Optional Tilt Out Feeder

24"W x 20"D x 40"H • 50 lbs. • 1 Year Warranty

FEEDER FEATURES:

- Tilts out horizontally into aisle for easy filling
- Rotational molded virgin polymer with UV inhibitors
- Tilts completely down for easy cleaning
- 37" above ground for natural feeding position
- Hinged lid keeps horse out while filling feeder
- Square grill design reduces waste
- Self-catching, push button, one handed latch
- Recessed, molded handle

PRODUCT	DESCRIPTION
SHQHS10TDFR	10' Trad Front w/ Feed Grill
SHQHS10TDFRREV	10' Trad Front Rev
SHQHS10TDSD	10' Trad Solid Dividers
SHQHS12TDFR	12' Trad Front
SHQHS12TDFRREV	12' Trad Front Rev
SHQHS12TDSD	12' Trad Solid Dividers
SHQHS12VSDIV	12' Trad Rail Dividers



LIVESTOCK HANDLING EQUIPMENT

196 1/2 E. 6th Street
Sioux Falls, SD 57104
info@siouxsteel.com
www.siuuxsteel.com

1-877-782-3073



SHOP ONLINE!

Search local dealerships
or buy direct online. MSRP
product pricing featured
along with additional product
information.

www.agpartsdirect.com