



*Designed To Meet
Your Operational Needs*



Contact Us

Thank you for considering Pro•Tec
Engineered Buildings. We look forward to
discussing your next building project.

Pro•Tec Buildings
P.O. Box 1265
Sioux Falls, SD 57101-1265

1-800-557-4689
(605-336-1750)
www.siouxsteel.com



Pro•Tec Engineered Buildings

A Division of
Sioux Steel Company



Building Solutions

We want to help you get the most value for your building investment. That's why we have engineered building solutions designed to protect your livestock, equipment, crops and anything else you need to store; while increasing your profits at the same time.

Pro•Tec Buildings provide natural lighting and superior ventilation, while offering unbeatable strength and durability. They are engineered to meet the needs of both small and large operations and are manufactured right here in the USA.

Pro•Tec Buildings are available in open span widths **up to 200 feet** and can be manufactured to any length.



Contents

Building Uses 4

Single Tube 6

Benefits/Warranty 10-11

Sentry 12

Gable 14

Options 18

3 Building Models

Single Tube Widths	Sentry Series Widths	Gable Widths
24'	40'	180'
30'	50'	200'
36'	60'	
	70'	
	80'	
	90'	
	100'	
	110'	
	130'	
	150'	
	180'	

Building Uses



Agriculture

- Grain Storage
- Livestock Production
- Hay Storage
- Horse Riding Arenas
- Horse Stables



Hay Storage



Livestock Production



Grain Storage



Horse Shelter



Industrial

- Aircraft Hangers
- Aircraft Maintenance
- Manufacturing
- Warehousing
- Machinery Storage & Repair
- Construction Site Covers
- Sand & Salt Storage



Commodity Storage



Salt & Sand Storage



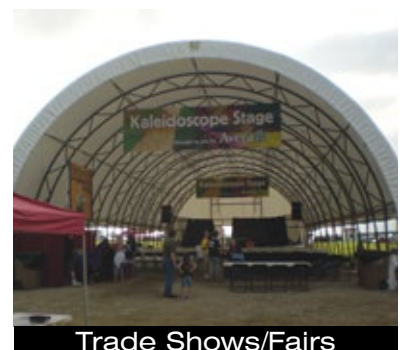
Machinery Storage



Hockey Rink



Residential Storage



Trade Shows/Fairs



Recreational

- Hockey Rinks
- Pool Enclosures
- Sporting Events
- Football Field Covers
- Event Centers
- Convention Space
- Gymnasiums



Household/Private

- Garages
- Boat & RV Storage
- Vehicle Maintenance
- Temporary Housing



SHOP ONLINE! :: www.agpartsdirect.com
Search local dealerships or shop Pro-Tec Building packages.



Features:

Widths: 24' & 30' w/ 6' rafter spacing; 36' w/ 5' rafter spacing

• Frame

14 gauge Allied Gatorshield tubing provides the framework for Single Tube buildings. At 2 1/2" in diameter and 50,000 PSI, it's strong and durable. Gatorshield galvanized coating offers unmatched protection against rust & corrosion.



Single tube frames are covered under a three year warranty.

• Cover

Standard woven polyethylene cover with white interior.

• Simple Ratchet Tie Downs

The fabric cover is attached and tightened with a ratchet tie-down system. The winches securely hold the cover in place and allow for quick, easy adjustment.

• Complete Hardware

Buildings feature no bolts or special tools. All connectors and rafters are plated to fight against rust and fitted for simple assembly. Most importantly, their special design results in a tight, immovable system that interlocks for maximum strength.

Different mounting options, such as wood, steel & cement blocks sold separately.

Covers are UV stabilized & feature:

- Weight: 12 oz. per square yard
- Coating: 4 mil each side
- Thickness: 20 mil



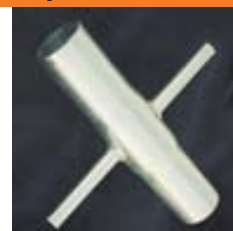
Simply Assembly With No Bolts Or Special Tools



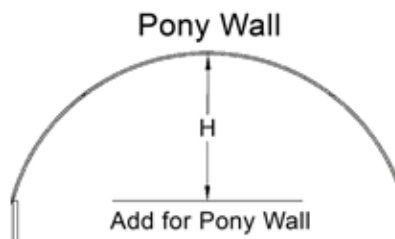
POST PLATE



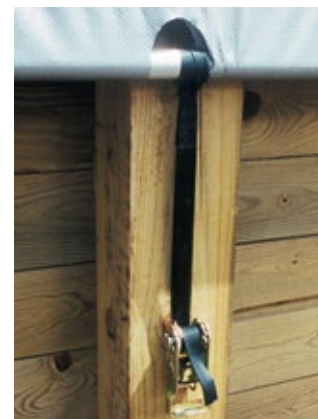
3-WAY
CONNECT



4-WAY
CONNECT



Width	Height
24'	9' 3"
30'	11' 6"
36'	13' 9"



**BUILDINGS
ARE EASILY
RELOCATED!**

Pony Wall Options



Tax Analysis

Because Pro•Tec Engineered Fabric Covered Buildings can be considered temporary, and due to Internal Revenue Code Section 179 Benefit, you may see a substantial tax savings with a Pro•Tec Building compared to traditional wood or steel buildings. Please note this is a general example. It is recommended to consult with your professional tax advisor to determine your eligibility of any tax savings.

\$25,000 Building Comparison w/ Section 179 Benefit

	Pro•Tec Building	Wood Structure
Initial Cost of Building	\$25,000	\$25,000
Depreciation:		
Depreciation Life = 1 Year	\$25,000	-
Depreciation Life = 39.5 Years	-	\$63
Tax Savings: (Assume 35% Tax Bracket) For Federal and State Income Taxes Tax Savings In First Year	\$8,750	\$22
Net Cost to Buyer After Tax Benefit After 1 Year	\$16,250	\$24,978

\$50,000 Comparison of Single Use, Removable Building

	Pro•Tec Building	Wood Structure
Initial Cost of Building	\$50,000	\$50,000
Depreciation:		
7 Year Life	\$7,143	-
39.5 Year Life	-	\$1,266
Total Depreciation After 7 Years	\$50,000	\$8,855
Tax Savings: (Assume 35% Tax Bracket) For Federal and State Income Taxes First 7 Years	\$17,500	\$3,099
Net Cost to Buyer After Tax Benefit After 7 Year	\$32,500	\$46,901

End Walls • Fabric or Steel Options



Attaching Fabric End Walls 2 Ways

The first option utilizes grommets and a lacing technique to attach and tighten fabric to the end tube. The second way adds additional fabric to the panel which then goes up and over the last end tube and tightens with ratchets. Please consult your local dealer for the best option for your building structure.



Livestock Environments • Single Tube & Sentry Options

Livestock will thrive with the natural lighting and excellent ventilation provided by Pro•Tec buildings.

- **Natural Setting**
- **Excellent Air Ventilation**
- **Lower Production Costs**
- **Improved Performance**
- **Comfort All Year Round**

Pro•Tec buildings offer adequate space for comfort, socialization and environmental management of your herd. Tightly woven polyethylene fabric covers with ridgevents provide natural lighting and proper airflow while giving cattle shade on hot summer days, decreasing the chance of heat stress.

Easily incorporate Sioux livestock gates and panels for a complete handling system.



"The high roof of the building allows the system to rise up and out from the cattle so they don't breathe in all the moisture. And no poles down the center for free stall barns."

TOM SMUDE
Midwest Sales &
Construction
Pierz, MN



Extending Current Buildings

Pro•Tec Buildings have the ability to grow as your operation grows. Extending the length of a building is easily done by removing any existing end panels, adding additional rafters, attaching a new fabric cover and incorporating the end panel again in its new location. This can be accomplished with any of our building models.



Building Benefits

- Saves you money by protecting your investments.
- Engineered for stability & strength.
- Offers superior ventilation.
- Unmatched natural lighting.
- Customized options available.
- Certifiable and insurable.
- Easy to expand the length when needed.
- Provide outstanding height, width and sidewall clearance for optimum capacity and accessibility.
- Use tough, tightly woven polyethylene fabric cover that stands tough against the elements and resists tearing and leakage.
- Numerous dealers throughout the U.S. and Internationally.
- Backed by a warranty as specified in the building owner's manual.



SHOP ONLINE! :: www.agpartsdirect.com
Search local dealerships or shop Pro-Tec Building packages.

Warranties

Pro•Tec buildings are easily insurable due to the high-quality engineering and construction put into each and every one.

Our registered professionals design these buildings with you in mind, allowing for optimum function and ease of use.

FRAMES:

- **Single Tube: 3 Year Warranty**
- **Sentry Series: 7 or 15 Year Prorated Warranty***

*Duration of warranty dependent on building environment (Livestock, Machine Storage, etc) & use of powder-coating or hot-dip for finish on frame.

COVER:

Cover materials are covered for a 15 year, prorated warranty.

ACCESSORIES:

3 year prorated warranties on fabricated tarp materials for end panels, roll up sides, curtains, doors, track doors, quarter panels and half moon end panels.

To qualify for warranty, the building must be erected per the Owner's Manual.

Testimonials



"We love our Pro•Tec feed building! It keeps the feed and equipment dry...We wish we would have put it up 10 years earlier!"

SALLY SUP

Sups Feed Service
Albion, NE



"We can get some howling winds and gusts in this location. Our building handles high winds, rain, hail, with no problem. There's no need for day-time lights. It's warmer inside than a steel building and it doesn't have the condensation

issue of a steel structure. We're really pleased with it."

JACKIE SEVIER

Middle Loup Livestock Nutrition
Seneca, NE

"The building goes up fast, is structurally superior and designed to last a long time. We are very pleased with it and the service the company has provided is the best."

MARK FLICKER

Pierz, MN



Widths: 40' Up To 180'

Spacing: 10', 12' or 16'

- **Wind Loads**

The Sentry building series is classified as partially enclosed and is engineered for wind speeds up to 90 mph. Custom options available for higher wind speeds.

This enclosure classification requires the use of .55 and -.55 internal pressure coefficients for positive and negative internal pressure. These are the highest coefficients that are required for any enclosure classification. It allows for a building to have three closed walls and one open wall. Pressure relief panels are not needed to lower the enclosure classification.

- **Snow Loads**

Both balanced and unbalanced snow is applied to the model as service load cases. The standard building series is designed to 30 psf, 40 psf and 50 psf ground snow. The trusses are spaced closer together as the snow load increases. 16ft, 12ft and 10ft respectively.

- **Professionally Engineered**

Engineered to 30-40-50 psf of ground snow and 90 mph basic wind speed!

Versatile Applications



A “cross-braced” design method has been incorporated for this building series. This method does not rely on the cover for bracing of the top chord.

Testimonial

"Ingram Feed & Seed recently erected a 40' x 60' Pro•Tec Sentry series building. We were able to assemble the frame and pull the cover ourselves which reduced our cost.

The Sentry series building was equipped with pallet racking to store protein & mineral tubs plus seed cleaning and treating equipment in the off season. We also keep two trucks under cover now. In a business where you gotta have it if your gonna sell it, the Pro•Tec Sentry series building helps Ingram Feed & Seed serve our customers' needs on a daily basis."

KENT INGRAM • Ingram Feed & Seed in Franklin, NE



Specifications

Building Width*	Rafter Spacing Options**	Rafter Chord Size	Rafter Branch Size	Rafter Depth
40'	16', 12', 10'	2.5"	1.5"	1'8"
50'	16', 12', 10'	2.5"	1.5"	1'8"
60'	16', 12', 10'	3"	1.5"	2'3"
70'	16', 12', 10'	3"	1.5"	2'3"
80'	16', 12', 10'	3"	1.5"	2'9"
90'	16', 12', 10'	3.5"	1.5"	2'9"
100'	16', 12', 10'	3.5"	1.5"	3'4"
110'	16', 12', 10'	4"	2"	3'4"
130'	16', 12', 10'	4"	2"	3'10"
150'	16', 12', 10'	4.5"	2.5"	4'4"
180'	16', 12', 10'	4.5"	2.5"	5'4"

* Measured outside to outside on vertical leg.

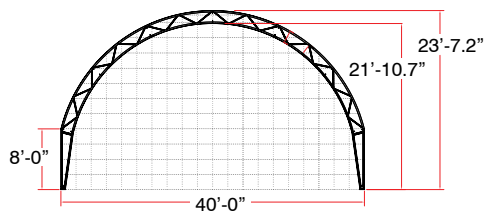
** Snow loads on rafter spacing is: 16'-30 psf; 12'-40 psf; 10'-50 psf



GALVANIZED

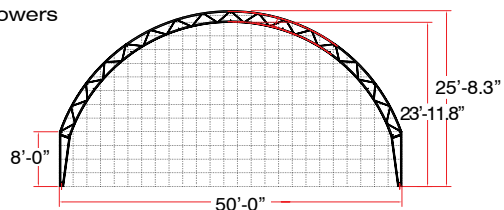
POWDER COATED TOUGH

POLY ethylene



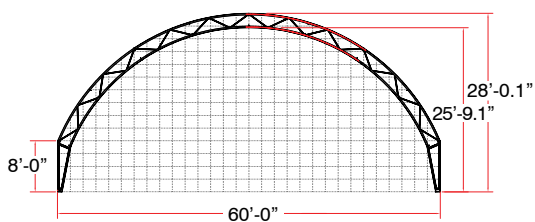
40' ARCH

Requires 2 End Wall Towers



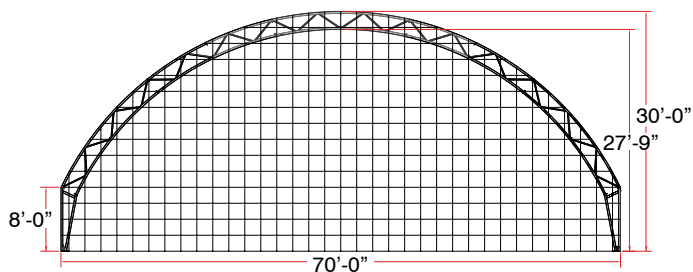
50' ARCH

Requires 2 End Wall Towers



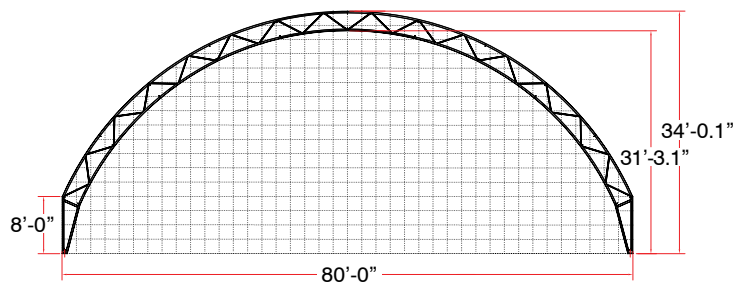
60' ARCH

Requires 4 End Wall Towers



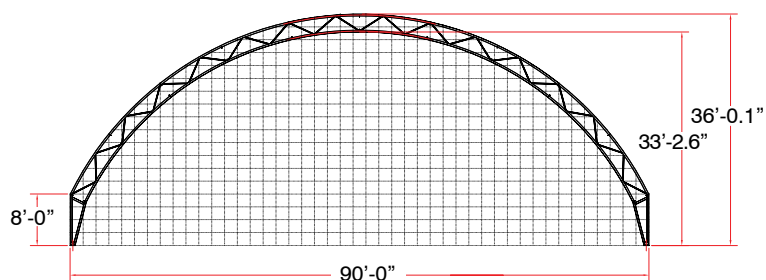
70' ARCH

Requires 4 End Wall Towers



80' ARCH

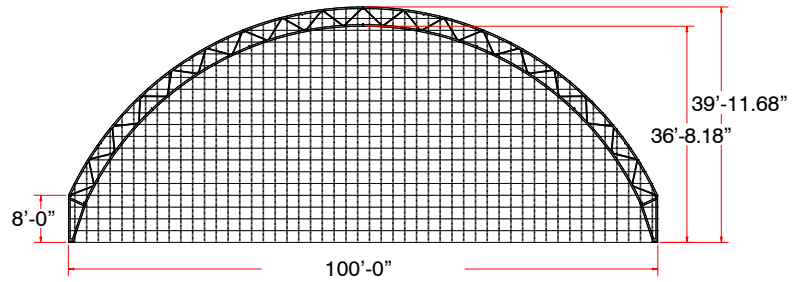
Requires 4 End Wall Towers



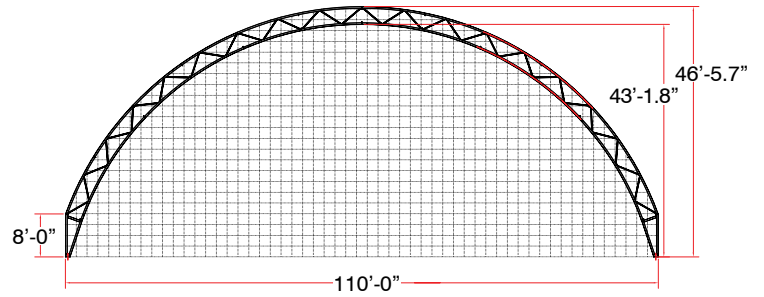
90' ARCH

Requires 4 End Wall Towers

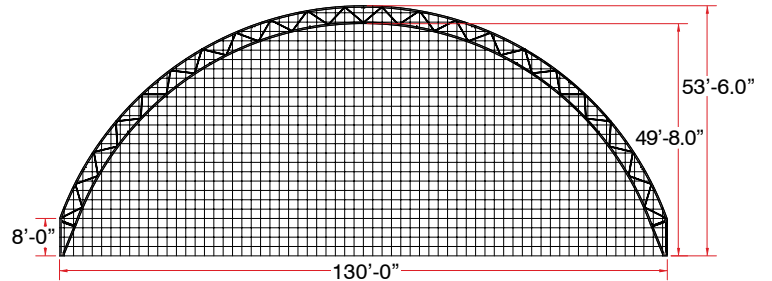




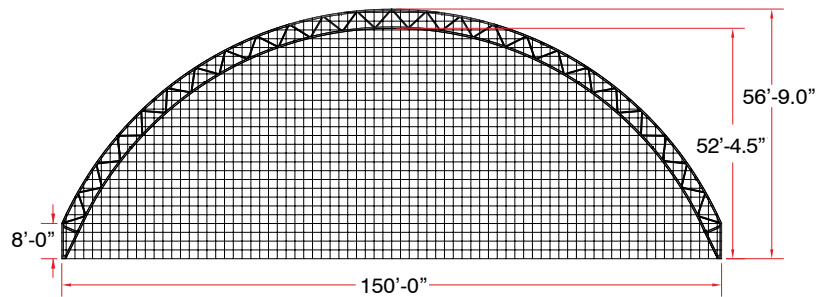
100' ARCH
Requires 4 End Wall Towers



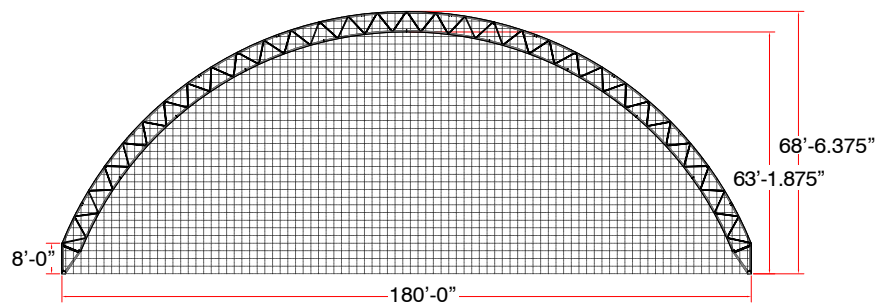
110' ARCH
Requires 6 End Wall Towers



130' ARCH
Requires 6 End Wall Towers



150' ARCH
Requires 6 End Wall Towers



180' ARCH
Requires 8 End Wall Towers

Widths: 180' & 200'

Spacing: 10', 12' or 16'

- **Wind Loads**

The Gable building series is classified for 105mph ultimate wind speed. This enclosure classification requires the use of .55 and -.55 internal pressure coefficients for positive and negative internal pressure. These are the highest coefficients that are required for any enclosure classification. It allows for a building to have three closed walls and one open wall. Pressure relief panels are not needed to lower the enclosure classification.

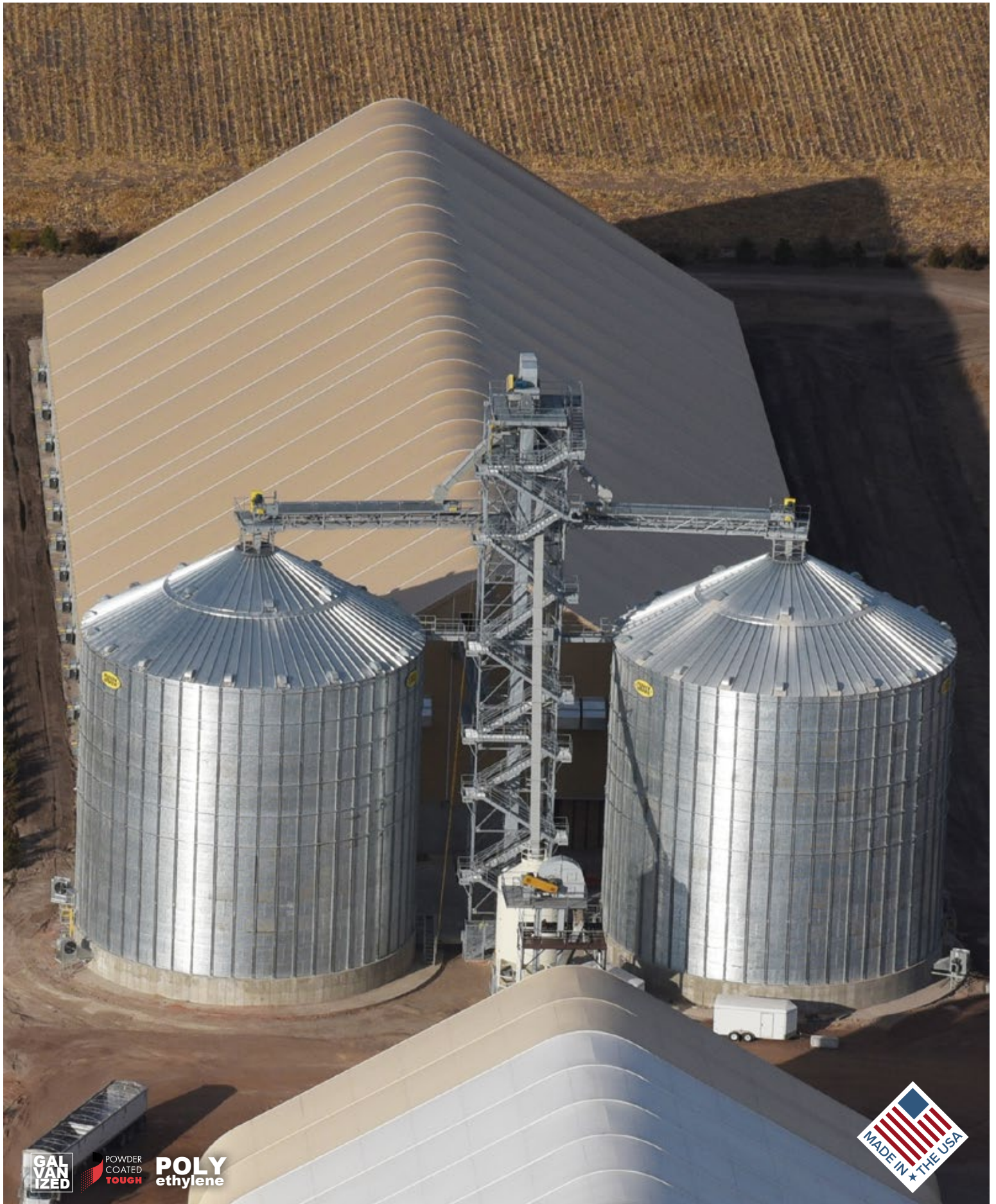
- **Snow Loads**

Both balanced and unbalanced snow is applied to the model as service load cases. The standard building series is designed to 30psf, 40psf, and 50psf ground snow. The trusses are spaced closer together as the snow load increases 16ft, 12ft, and 10ft respectively.

- **Design Load Combinations**

Service loads are factored and combined in accordance with ASCE 7-05. Applying the load cases to the entire building system is essential in the design of this type of building. Loading a single frame of the building is not an accurate depiction of the actual conditions that a building would be under in its intended environment.





GALVANIZED

**POWDER
COATED
TOUGH**

**POLY
ethylene**



Grain Storage

- **Safety is our #1 Priority:**

We follow the 2009 International Building Code when designing all of our buildings.

Wind loads are calculated based on a partially enclosed building classification. Partially enclosed classification uses the highest wind forces of any building classification. This allows you to detail building wall and door layouts as needed, without worry of the building being under-designed.

These buildings are designed as partially enclosed because it is the recommended interpretation of the building code for fabric buildings. A “cross-braced” design method has been incorporated for this building series. This method does not rely on the cover for bracing of the top chord. It also ensures that the building maintains it’s required strength regardless of a tear in the cover due to blowing debris.

No reduction in snow loads that are not allowed by the code are taken.



General: ASCE 7-05 specifications are used for the design of all of the Sentry Series buildings. Dead, wind and snow loads are calculated and applied to the structure. STAAD.PRO V8i structural software is used to analyze the truss system. An entire building is modeled, not an individual arch. That ensures that force transfer between trusses, cables, and lateral bracing (purlins), are incorporated together. LRFD design of the building is used in accordance with AISC 360-10. Excel design spreadsheets are used in the remainder of the design for bolted and welded connections, cables, truss member design, base plates, and tension pipes.

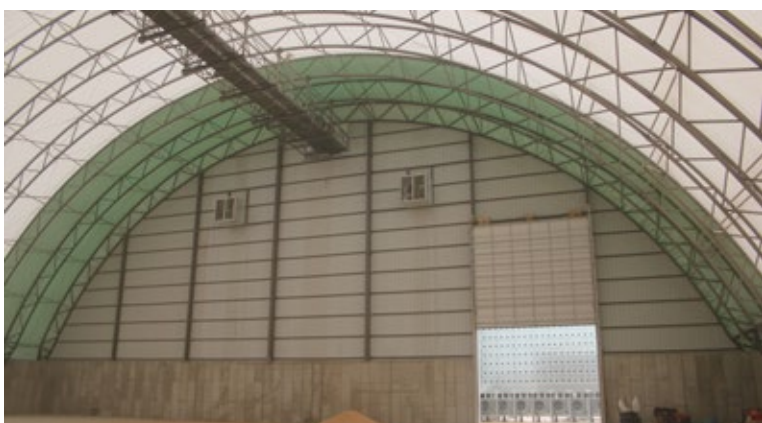
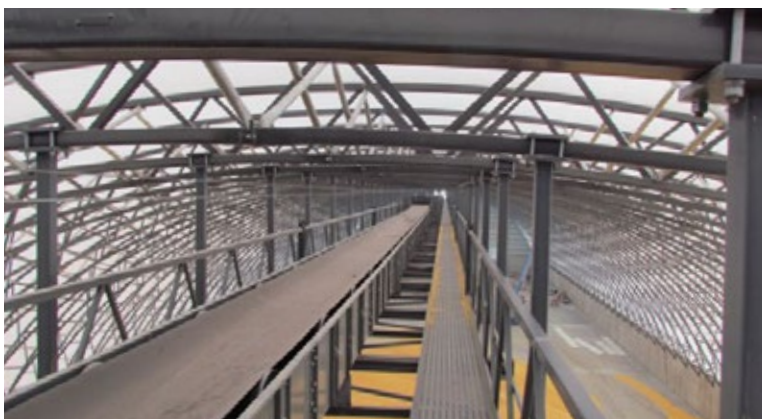
Grain Storage

Innovative Design Ideas:

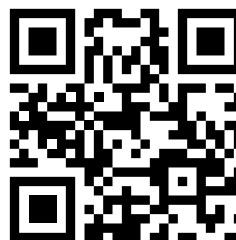
Sentry & Gable Series building highlights include:

- Using all high strength steel
- “Cross-braced” frames
- Rolled chords
- Universal wall attachments
- Conveyor capabilities
- Simplified construction

And many more features that make the Sentry & Gable building a state of the art investment for any application.



**Please contact your local
Pro•Tec Dealer for a
customized quote on a
Sentry or Gable Style building.**

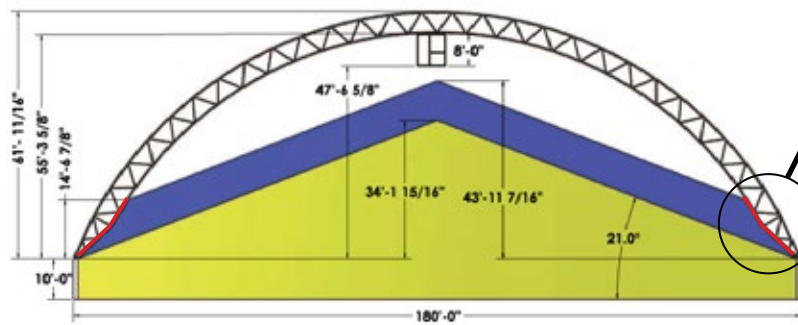
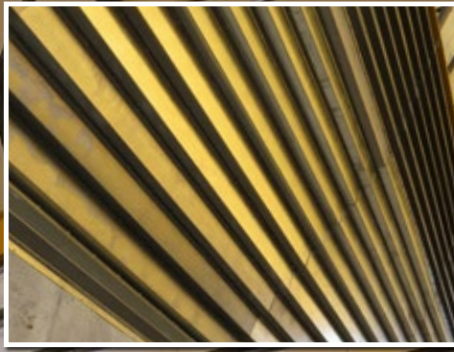


**Scan This
Code With Your
Smartphone
To See More
Examples.**

Testimonial - Mitch Williams, President/CEO of Ag Partners Coop in Hiawatha, KS

“In today’s environment, we wanted to add storage that would give us maximum flexibility. Our hope is that every year we are able to fill this building with grain. The reality is that we have experienced times that grain was short and our need for storage was not as great. With this building, we believe that it gives us flexibility to use it for other purposes, such as seed storage, equipment storage, and even possibly fertilizer storage. Getting the most out of our dollar was critical and I believe we accomplished this with the Pro•Tec Building.”





Grain Shield

Store over **30%** more grain by adding a grain shield to your Pro•Tec building. The area in purple represents the additional storage space you would receive. Available in Sentry models.

Grain Storage Facilities



- Engineered To Utilize Load-In Conveyor
- Cost-Effective
- Store Commodity & Equipment

- Optional In-Floor Aeration & Unload Available
- Large Capacity Storage

As farms and cooperatives grow larger, they are seeking a better way to store their product. Sentry series options are available for just this purpose.

Our buildings fit your needs by offering large capacity economical corn storage! Plus these flexible multi-use storage buildings can serve other storage needs

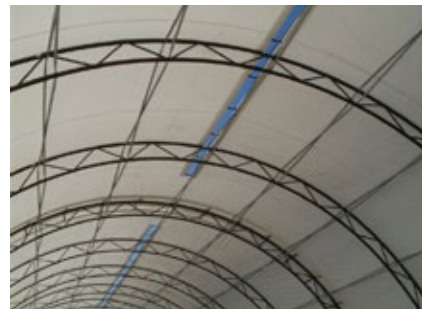
when not in use for grain storage. Flat grain storage is a popular and cost-effective way to store high quantities of grain and other commodities.



Building Options

Ridge Vents

Ridge vents allow for more air flow and a much wider air pattern. This maximizes heat distribution and humidity control.



Awnings

Protection from the elements. Our durable awnings shelter feeders and bar direct sunlight from your livestock.



Track Doors

Track doors are a perfect solution to aesthetics & function, offering an external appearance & large entrance clearance.



Roll Up Doors

Adjustable roll up doors move up and down to regulate air intake and exhaust. A barrier from the sun, reducing indoor heat.



Sides

Curtains can be drawn to help circulate air flow or kept up to block direct sunlight.



SHOP ONLINE! :: www.agpartsdirect.com
Search local dealerships or shop Pro-Tec Building packages.

Cover Colors

CLEAR	WHITE	BLACK	BEIGE	BROWN	DARK BLUE
STANDARD BLUE	STANDARD GREEN	STANDARD RED	BRIGHT RED	SILVER	

Covers are not used as a structural part of the building. They do not absorb heat, so the temperature inside the building is cooler in the summer and warmer in the winter. Covers are UV stabilized & feature a weight of 12 oz. per square yard, a coating of 4 mil on each side and a thickness of 20 mil.



Colors may vary from above samples.





For more information and your nearest dealer, contact:

Sioux Steel Company
P.O. Box 1265
Sioux Falls, SD 57101-1265

1-800-557-4689
1-605-336-1750
www.siouxsteel.com

Compared to Wood or Steel Structures,
Pro•Tec Buildings Offer:

- **Easy Relocation**
- **Natural Lighting**
- **Simplified Installation**
- **Lower Project Costs**
- **Minimal Maintenance**
- **Foundation Choices**



SHOP ONLINE!

Search local dealerships or buy direct online. MSRP product pricing featured along with Pro-Tec Building packages & additional product information.

www.agpartsdirect.com



19
SINCE
18

Since 1918, Sioux Steel Company is now in its fifth generation as a family-owned company. Based in Sioux Falls, South Dakota, we know the agricultural industry and know that you need high-quality, dependable products. Our mission continues to be not only to satisfy our customers, but we want them to be ***delighted*** to do business with us.

Interested in working for Sioux Steel Company? Scan this QR Code with your smartphone to e-mail us for our current employment opportunities.

