

# EQUIPMENT SUPPORT SOLUTIONS

*Elevator Towers • Catwalks • Stairways*



**BUILT**  
*for LIFE™*

 **SCAFCO®**  
*Grain Systems Co.*

**Serving Agriculture and Industry Since 1954**

# ELEVATOR SUPPORT TOWERS

## SMART CHOICE

SCAFCO Grain Systems Towers are a smart choice for supporting bucket elevators. Towers use less space than guyed structures and can be configured to support overhead handling equipment, spouting, distributors, bulk weighers, and cleaners. Towers also allow for safe workspaces for equipment maintenance at all levels. All SCAFCO Elevator Support Towers are constructed with structural steel columns, beams and braces; and are fabricated by certified welders.

## STANDARD FEATURES

- All tower structures are hot-dip galvanized for long life and durability.
- All SCAFCO Tower, Catwalk and Stairway cold roll steel is G115 (350 g/m<sup>2</sup>) galvanized, which offers 28% better corrosion protection over all of our major competitors' G90 steel.
- Best in Industry SAE Grade 8 (DIN 10.9) and ASTM A325 hardware.
- Standard base dimensions in 2' (0.6 m) increments, from 8' (2.4 m) to 24' (7.3 m) wide. Custom sizes are available.
- Standard tower heights in 5' (1.5 m) increments.
- Designed with precision 3D modeling for any wind, snow, ice, seismic or occupancy category requirements.
- Ready-fit connections, minimal installation labor and efficient shipping anywhere in the world.
- Professional Engineer stamped designs available for all US and Canada locations.



## OPTIONAL FEATURES

- Ready-fit switchback stairs, wrap around stairs, ladders, cages and fall protection.
- Platforms at any level for equipment maintenance, catwalk entrances or control sheds.
- Bracing customizations for spouting, distributors, conveyors and the like.

# STANDARD CATWALKS

## CATWALKS TO FIT YOUR NEEDS

SCAFCO Grain Systems has a complete line of pre-assembled or break-down standard catwalks to fit any material handling and equipment access need. All catwalks are designed to meet live load, wind, seismic and static load requirements for your facility.

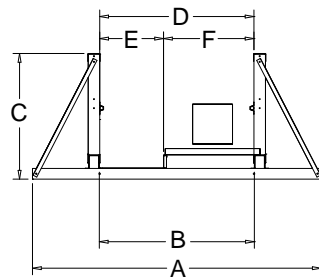


## HANDRAIL TRUSS CATWALKS

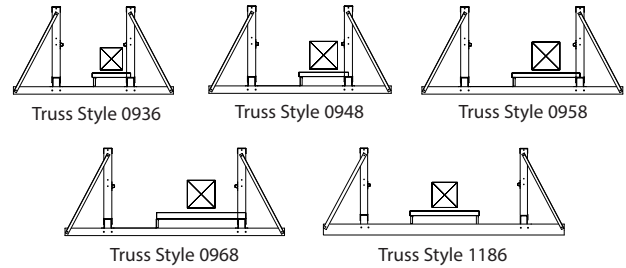
- 100% hot-dip galvanized steel for long life and durability.
- 24" (0.6 m) wide equipment access walkways or full-width walkways.
- Standard widths of 36" (0.9 m), 48" (1.2 m), 58" (1.5 m), 68" (1.7 m) and 86" (2.2 m), with clear spans up to 50' (15.2 m). Custom widths and spans available.
- Walkways may be supplied with slip resistant decking or structural bar grating options.
- Best in Industry SAE Grade 8 (DIN 10.9) and ASTM A325 hardware.
- Ready-fit sections easily connect to conveyors, towers, bin supports, ladders and other accessories.

# STANDARD CATWALKS (CONT.)

TYPICAL DIMENSIONING SCHEME		
	INCHES	MILLIMETERS
A	108"	2743
B	58"	1473
C	47"	1194
D	57 <sup>11</sup> / <sub>16</sub> "	1465
E	23 <sup>7</sup> / <sub>8</sub> "	606
F	33 <sup>13</sup> / <sub>16</sub> "	859



## STANDARD SIZES Handrail Truss Catwalk



## CATWALK STYLES

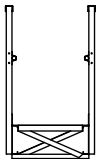


## WALK-THROUGH & UNDER-TRUSS STYLE CATWALKS

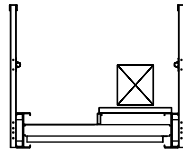
SCAFCO can design any size catwalk to fit your grain handling and equipment access needs. Catwalks may be designed to support conveyors of any width. Walkways may be supplied with structural bar grating or cold-formed slip resistant decking.

## STANDARD SIZES

### Beam Style Catwalk



Beam Style 1024



Beam Style 1248



## BEAM STYLE CATWALKS

- 100% galvanized steel for long life and durability.
- Best in Industry SAE Grade 8 (DIN 10.9) and ASTM A325 hardware.
- Standard widths of 24" (0.6 m) and 48" (1.2m), with various widths and spans available.
- Ready-fit sections easily connect to conveyors, towers, bin supports, ladders and other accessories.



# CATWALK SUPPORTS

## MONEY-SAVING SOLUTION

SCAFCO Grain Systems provides two-leg and four-leg catwalk support towers in various sizes to support your equipment at any height. If space is limited for a catwalk tower, SCAFCO offers a unique catwalk support that is connected to the silo stiffeners. When designed in combination with your silos, handling equipment and other accessories, SCAFCO catwalk supports can be a great space and money-saving solution.



5400 E. Broadway Avenue  
PO Box 11215  
Spokane, Washington 99211 USA

Phone: +1-509-535-1571  
E-mail: [info@SCAFCOgrain.com](mailto:info@SCAFCOgrain.com)  
[www.SCAFCOgrain.com](http://www.SCAFCOgrain.com)